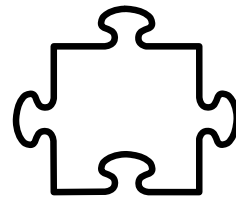
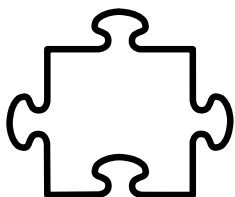
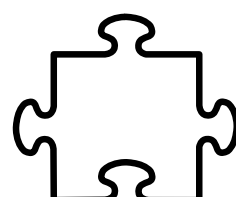
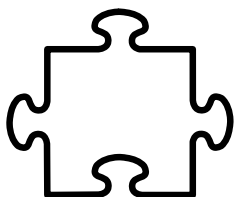
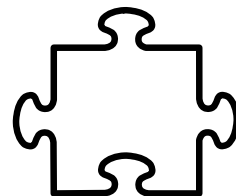
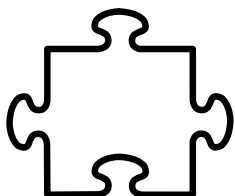
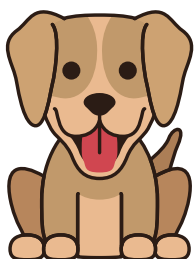
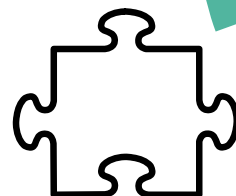
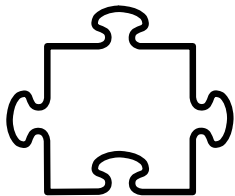
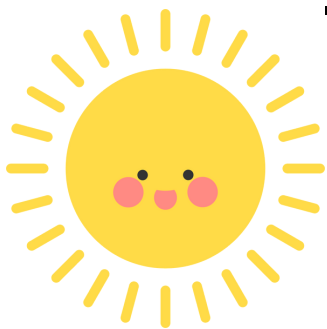


KOKIU GARSU PRASIDEDA  
ŽODIS S AR Š? ĮRAŠYK

---



**PASKAITYKIME**

SA SO SU SE SI

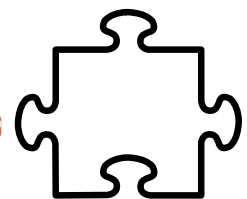
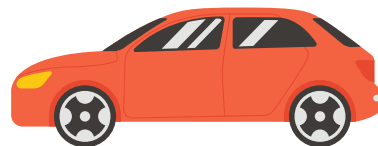
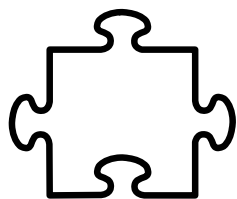
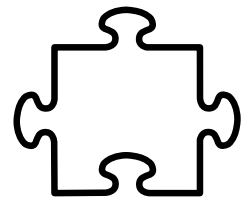
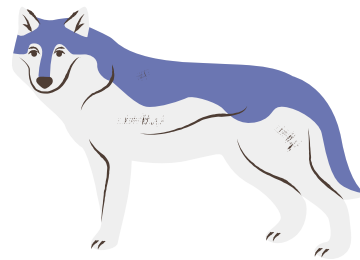
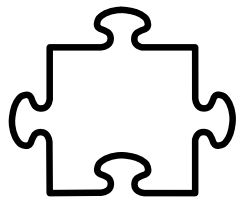
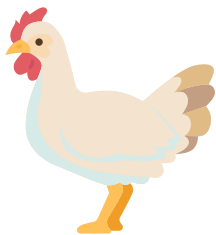
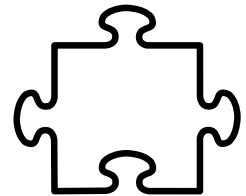
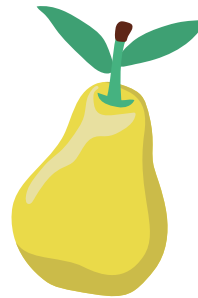
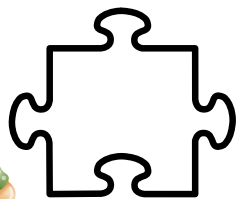
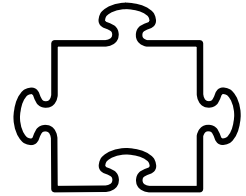
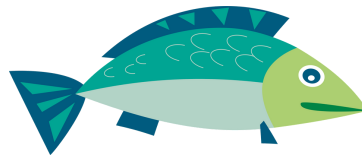
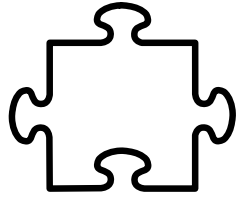
ŠA ŠO ŠU ŠE ŠI

ASA OSO USU

EŠE AŠI OŠU

KIRIUOSE ŽODŽIUOSE GIRDI S,  
O KURIUOSE Š? ĮRAŠYK

---

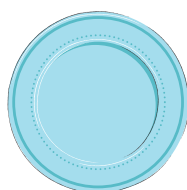
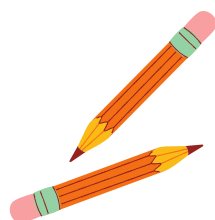
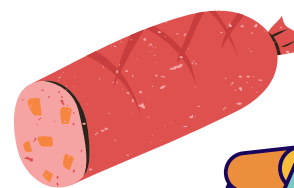
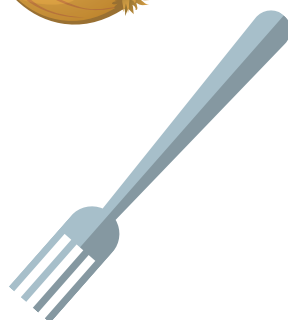
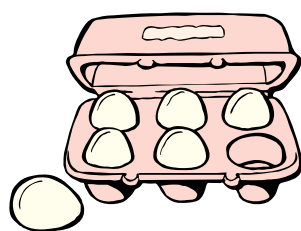
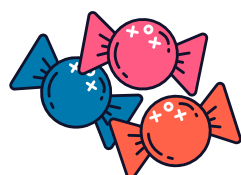
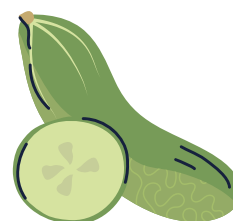
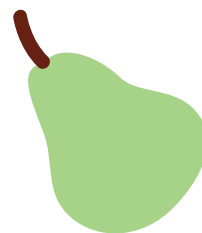
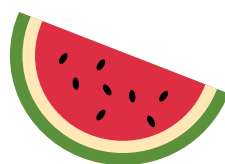


**PASKAITYKIME**

SA SA SA KEPTA MĖSA  
SI SI SI SALDAINIŲ DUOSI  
ŠO ŠO ŠO ŠUO AUSIŲ KASO  
SE SE SE GĖLĖS LAUKUOSE

# APSIPIRKIM!

PADĖK SURŪŠIUOTI PREKES Į TINKAMUS VEŽIMĖLIUS. JEI ŽODYJE GIRDI GARSĄ Š, TAI JIS KELIAUJA Į Š PREKIŲ VEŽIMĖLĮ, JEI GIRDI S, ŽODELIS KELIAUJA Į S VEŽIMĖLĮ.

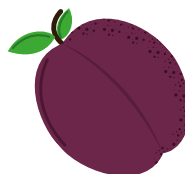


# S IR Š

ĮRAŠK ŽODELIUS, RAIDELES S IR Š NUSPALVINK



○ ○ ○ ○ ○ ○ ○ ○



○ ○ ○ ○ ○ ○ ○ ○



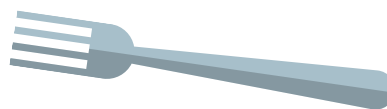
○ ○ ○ ○ ○ ○ ○ ○



○ ○ ○ ○ ○ ○ ○ ○



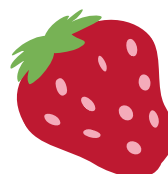
○ ○ ○ ○ ○ ○ ○ ○



○ ○ ○ ○ ○ ○ ○ ○



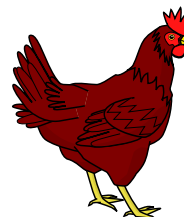
○ ○ ○ ○ ○ ○ ○ ○



○ ○ ○ ○ ○ ○ ○ ○



○ ○ ○ ○ ○ ○ ○ ○



○ ○ ○ ○ ○ ○ ○ ○